

<https://www.massaudubon.org/get-outdoors/wildlife-sanctuaries/oak-knoll>

<https://www.facebook.com/MassAudubonOakKnoll>

<https://www.instagram.com/massaudubon>

<https://www.youtube.com/user/MassAudubon>

<https://www.cityofattleboro.us/37/Conservation-Commission>

<https://www.attleborolandtrust.org>

<https://www.facebook.com/attleborolandtrust>

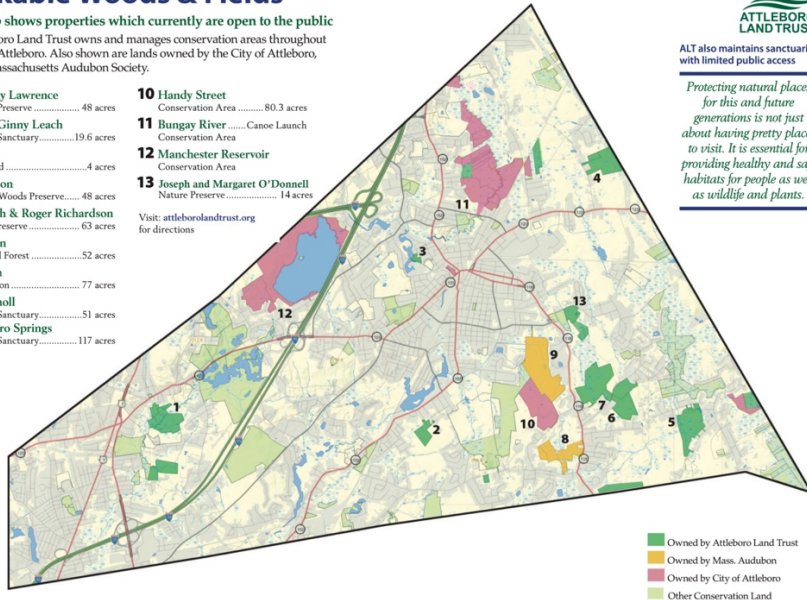
<https://www.instagram.com/attleborolandtrust/>

<https://www.youtube.com/channel/UCUAg-BwaBICy-HuIXd2lrg>

## ATTLEBORO AREA Walkable Woods & Fields

This map shows properties which currently are open to the public. The Attleboro Land Trust owns and manages conservation areas throughout the city of Attleboro. Also shown are lands owned by the City of Attleboro, and the Massachusetts Audubon Society.

- |  |   |
|--|---|
| 1 Anthony Lawrence<br>Wildlife Preserve.....48 acres         | 10 Handy Street<br>Conservation Area.....80.3 acres   |
| 2 Phil & Ginny Leach<br>Wildlife Sanctuary.....19.6 acres    | 11 Bungay River<br>Canoe Launch<br>Conservation Area  |
| 3 Larson<br>Woodland.....4 acres                             | 12 Manchester Reservoir<br>Conservation Area  |
| 4 Nickerson<br>Walking Woods Preserve.....48 acres           | 13 Joseph and Margaret O'Donnell<br>Nature Preserve.....14 acres                            |
| 5 Deborah & Roger Richardson<br>Nature Preserve.....63 acres | Visit: <a href="http://attleborolandtrust.org">attleborolandtrust.org</a><br>for directions |
| 6 Vaughan<br>Memorial Forest.....52 acres                    |   |
| 7 Colman<br>Reservation.....77 acres                         |   |
| 8 Oak Knoll<br>Wildlife Sanctuary.....51 acres               |   |
| 9 Attleboro Springs<br>Wildlife Sanctuary.....117 acres      |   |



ALT also maintains sanctuaries with limited public access

Protecting natural places for this and future generations is not just about having pretty places to visit. It is essential for providing healthy and safe habitats for people as well as wildlife and plants.

### Selfie Scavenger Hunt Rules:

- Individual or Group must take selfies at designated pictured locations at Hike Attleboro properties
- 2023 Scavenger Hunt will run through September 30, 2023.
- Selfies can be emailed to [attleborolandtrust@gmail.com](mailto:attleborolandtrust@gmail.com)



Richardson Preserve Map  
(Scan with your phones camera)

Visit [www.HikeAttleboro.org](http://www.HikeAttleboro.org)  
for more information and links  
to all Hike Attleboro Trails



### HIKE ATTLEBORO Selfie Scavenger Hunt

Hike Attleboro is a partnership between the three key open space landowners in Attleboro.

The immediate aim is to raise awareness of the many hiking trails available in neighborhoods around the city. The eventual goal is to connect these trails into a city-wide network.



See a variety of wildlife at  
Brothers Pond at Attleboro  
Springs



Learn about vernal pools at  
Richardson



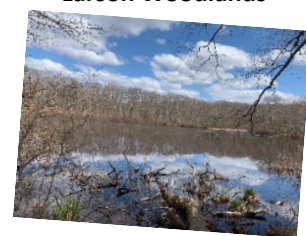
Puddingstone at Attleboro  
Springs has an interesting  
geological history



Mechanics Pond Dam at  
Larson Woodlands



Site of a grand garden at  
Richardson



Lake Talaquega at Oak Knoll

## Destinations

### Richardson Nature Preserve

577B Wilmarth Street, Attleboro

### Colman Reservation

186 Steere Street, Attleboro

### Larson Woodland

50 Watson Avenue, Attleboro

### Lawrence Wildlife Preserve

45 Hope Avenue, Attleboro

### Leach Wildlife Sanctuary

End of Fisher Ave, Attleboro

### Nickerson Walking Woods

221 Richardson Avenue



### Oak Knoll Wildlife Sanctuary

1417 Park Street, Attleboro

### Attleboro Springs

947 Park St, Attleboro



### Handy Street Conservation Area

109 Handy St. Attleboro

### Highland Park

199 Mechanic Street, Attleboro

### Balfour River Walk

74 N. Main St., Attleboro





The Giant Hemlock at Colman



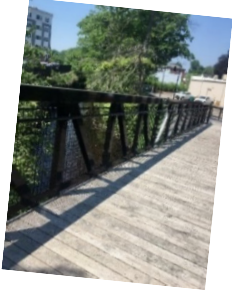
Snapping turtle nests at Larson Mechanics Pond



A Richardson Boardwalk



The red maple swamp at Richardson



Dumas Boardwalk crossing of the Ten Mile River



Mural opposite the Balfour Riverwalk



Entrance sign at Handy St.



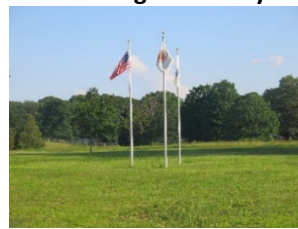
The "Big Rock" at Leach



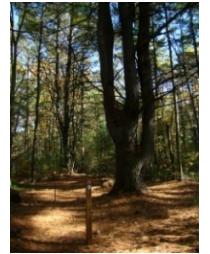
Marsh at Lawrence Preserve



The bench at Lawrence Preserve



Flag poles at Highland Park



Forked tree at Nickerson  
UPDATE:  
2 of the 3 forks have fallen!



### Scavenger Hunt-2023

Completed Selfie submissions of all 18 images=free Hike Attleboro T-Shirt!